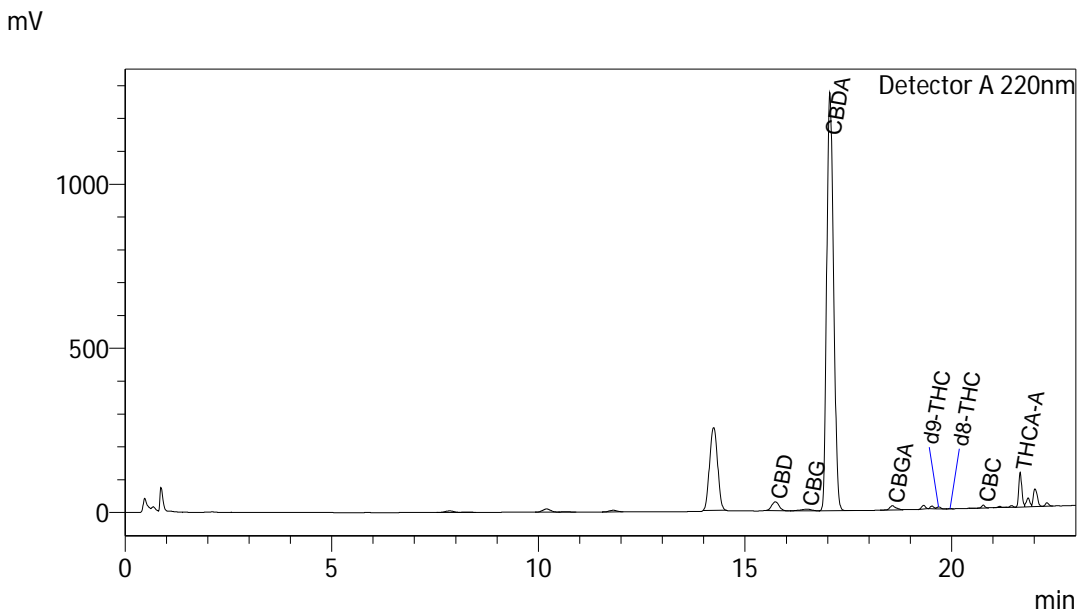


Certificate of Analysis

Sample Information

Client : GMG Farms
 Sample ID : GMG_Midwest_Flower_11172019
 Sample Type : Hemp Flower
 Analyst : KB
 Receipt Date : 11/17/2019
 Test Date : 11/18/2019

Chromatogram



Cannabinoid Summary

Detector A

ID#	Name	Weight %
1	CBDV	0.00
2	CBD	0.30
3	CBG	0.09
4	CBDA	11.22
5	CBGA	0.10
6	CBN	0.00
7	d9-THC	0.04
8	d8-THC	0.00
9	CBC	0.04
10	THCA-A	0.45

Total THC	0.43	%
Total THC	4.35	mg/g
Total CBD	10.14	%
Total CBD	101.42	mg/g

Moisture Content (wt.%): 12.51

Dry Weight Basis (wt.%)

Total CBD: 11.59

Total THC: 0.50



Percentage data represents weight percentage of sample as received by Kria Botanicals.
 The collected data was compared to data collected for certified reference standards at known concentrations.
 Total THC = THCa * 0.877 + d9-THC; Total CBD = CBDA * 0.877 + CBD; Instrument: High Performance Liquid Chromatography (HPLC)
 A value of 0.00 indicates that the cannabinoid was not detected (ND), however it could be present at a level below the limit of detection.