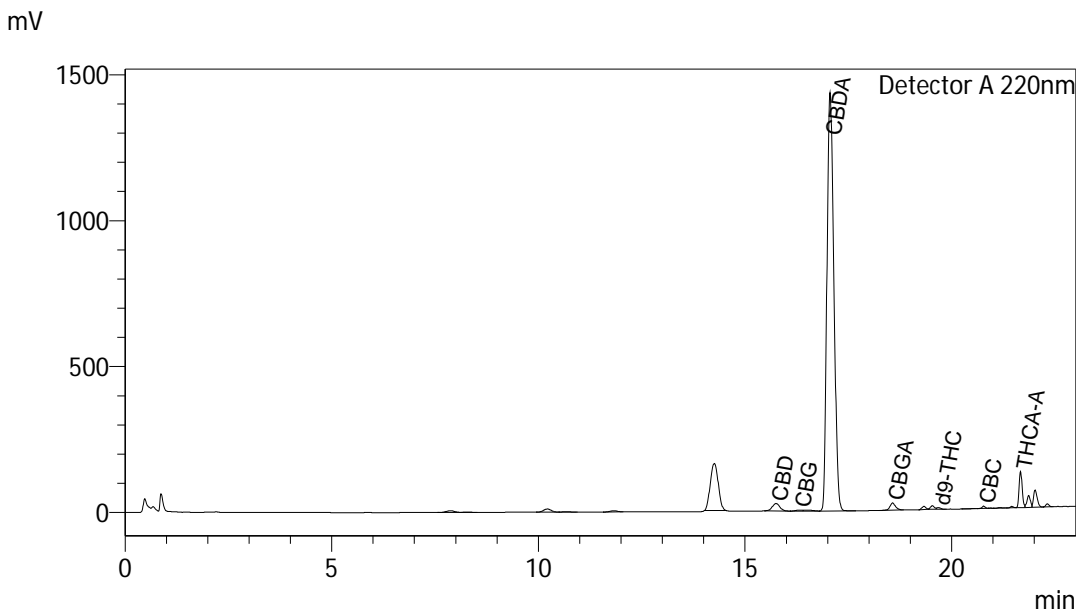


# Certificate of Analysis

## Sample Information

Client : GMG Farms  
 Sample ID : GMG\_T2\_Flower\_11172019  
 Sample Type : Hemp Flower  
 Analyst : KB  
 Receipt Date : 11/17/2019  
 Test Date : 11/18/2019

## Chromatogram



## Cannabinoid Summary

Detector A

ID#	Name	Weight %
1	CBDV	0.00
2	CBD	0.32
3	CBG	0.04
4	CBDA	14.28
5	CBGA	0.20
6	CBN	0.00
7	d9-THC	0.04
8	d8-THC	0.00
9	CBC	0.04
10	THCA-A	0.60

Total THC	0.56	%
Total THC	5.63	mg/g
Total CBD	12.85	%
Total CBD	128.47	mg/g

Moisture Content (wt.%): 11.99

Dry Weight Basis (wt.%)

Total CBD: 14.60

Total THC: 0.64



Percentage data represents weight percentage of sample as received by Kria Botanicals.  
 The collected data was compared to data collected for certified reference standards at known concentrations.  
 Total THC = THCa \* 0.877 + d9-THC; Total CBD = CBDA \* 0.877 + CBD; Instrument: High Performance Liquid Chromatography (HPLC)  
 A value of 0.00 indicates that the cannabinoid was not detected (ND), however it could be present at a level below the limit of detection.